



# Test Report

No.: SHAEC26001367601

Date: Jan 22, 2026

Page 1 of 7

Client Name: MindMotion Microelectronics Co., Ltd.

Client Address: 9/F, Building 6, No. 26, Qiuyue Road, Pudong New District, Shanghai

Sample Name: QFN

The above sample(s) and information were provided by the client.

---

SGS Job No.: SHP26-001417

Sample Receiving Date: Jan 16, 2026

Testing Period: Jan 16, 2026 ~ Jan 22, 2026

Test Requested:

Signed for and on behalf of  
SGS-CSTC Standards Technical Services (Shanghai) Co., Ltd.

Jenny Lan  
Approved Signatory





# Test Report

No.: SHAEC26001367601

Date: Jan 22, 2026

Page 2 of 7

## Test Result(s):

### Test Part Description

SN ID	Sample No.	SGS Sample ID	Description
SN1	A1	SHA26-0013676-0001.C001	Black/Silvery solid with grey printing

#### Remarks:

- (1) 1 mg/kg = 1 ppm = 0.0001%
- (2) MDL = Method Detection Limit
- (3) ND = Not Detected (< MDL)
- (4) "-" = Not Regulated

**EU RoHS Directive (EU) 2015/863 amending Annex II to Directive 2011/65/EU - Lead, Mercury, Cadmium, Hexavalent chromium, Polybrominated biphenyls (PBB), Polybrominated diphenyl ethers (PBDE), Bis(2-ethylhexyl) phthalate (DEHP), Butyl benzyl phthalate (BBP), Dibutyl phthalate (DBP) and Diisobutyl phthalate (DIBP)**

**Test Method:** With reference to IEC 62321-4:2013+AMD1:2017, IEC 62321-5:2013, IEC 62321-7-2:2017 and IEC 62321-12:2023, analysis was performed by ICP-OES/AAS, UV-Vis and GC-MS.

Test Item(s)	Limit	Unit(s)	MDL	A1
Lead (Pb)	1000	mg/kg	2	ND
Mercury (Hg)	1000	mg/kg	2	ND
Cadmium (Cd)	100	mg/kg	2	ND
Hexavalent Chromium (Cr(VI))	1000	mg/kg	8	ND
Polybrominated biphenyls (PBB)	1000	mg/kg	-	ND
Monobrominated biphenyl (MonoBB)	-	mg/kg	25	ND
Dibrominated biphenyl (DiBB)	-	mg/kg	25	ND
Tribrominated biphenyl (TriBB)	-	mg/kg	25	ND
Tetrabrominated biphenyl (TetraBB)	-	mg/kg	25	ND
Pentabrominated biphenyl (PentaBB)	-	mg/kg	25	ND
Hexabrominated biphenyl (HexaBB)	-	mg/kg	25	ND
Heptabrominated biphenyl (HeptaBB)	-	mg/kg	25	ND
Octabrominated biphenyl (OctaBB)	-	mg/kg	25	ND
Nonabrominated biphenyl (NonaBB)	-	mg/kg	25	ND
Decabrominated biphenyl (DecaBB)	-	mg/kg	25	ND
Polybrominated diphenyl ethers (PBDE)	1000	mg/kg	-	ND
Monobrominated diphenyl ether (MonoBDE)	-	mg/kg	25	ND
Dibrominated diphenyl ether (DiBDE)	-	mg/kg	25	ND
Tribrominated diphenyl ether (TriBDE)	-	mg/kg	25	ND
Tetrabrominated diphenyl ether (TetraBDE)	-	mg/kg	25	ND
Pentabrominated diphenyl ether (PentaBDE)	-	mg/kg	25	ND
Hexabrominated diphenyl ether (HexaBDE)	-	mg/kg	25	ND
Heptabrominated diphenyl ether (HeptaBDE)	-	mg/kg	25	ND



**Test Report**

**No.:** SHAEC26001367601

**Date:** Jan 22, 2026

Page 3 of 7

Test Item(s)	Limit	Unit(s)
--------------	-------	---------

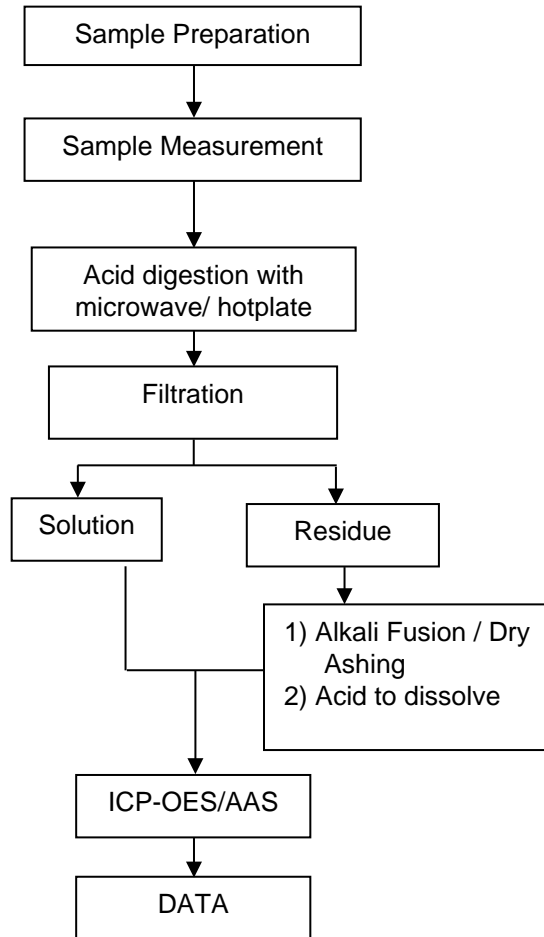




ATTACHMENTS

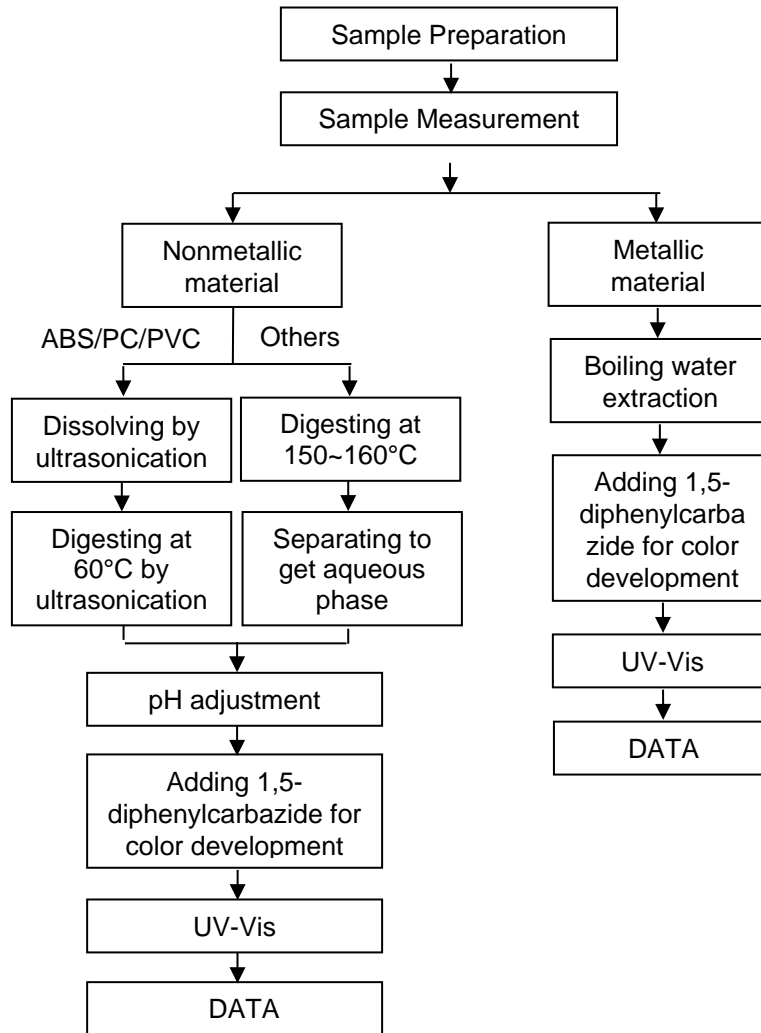
Elements Testing Flow Chart

These samples were dissolved totally by pre-conditioning method according to below flow chart.



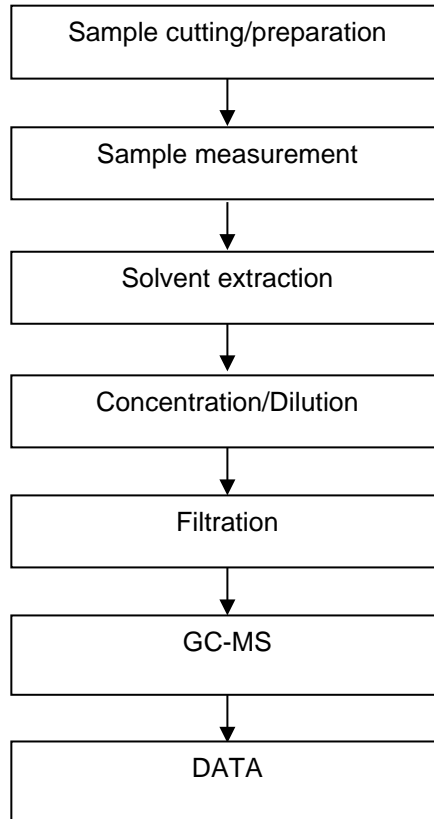


**Hexavalent Chromium (Cr(VI)) Testing Flow Chart**





**PBB(s)/PBDE(s)/Phthalates Testing Flow Chart**



# Test Report